



casagrande

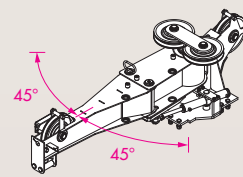
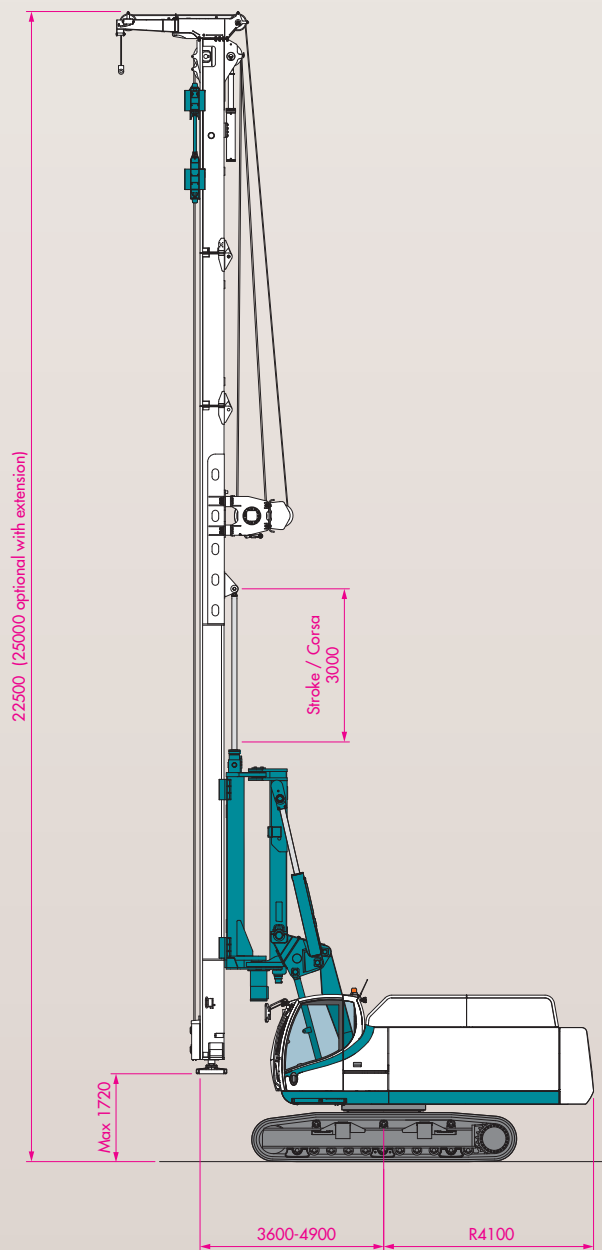
V16-19

HYDRAULIC PILING RIG

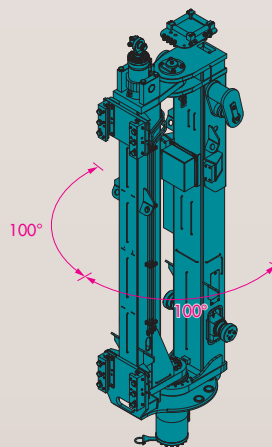
ATTREZZATURA IDRAULICA PER PALI

DIMENSIONS

DIMENSIONI



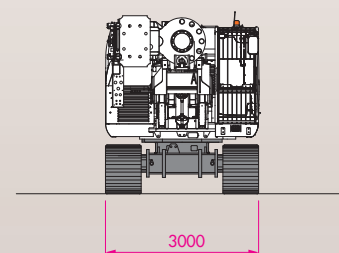
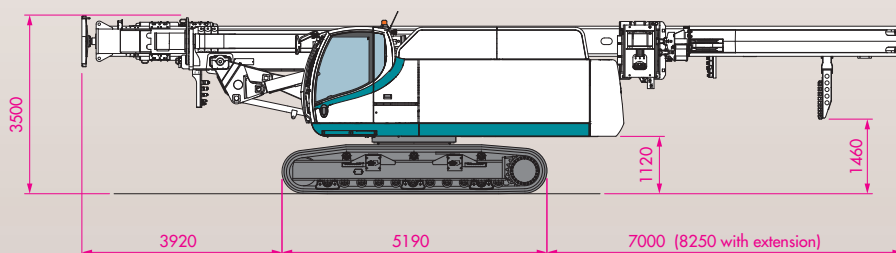
Rotating jib
Falchetto girevole



Rotating mast
Rotazione mast

TRANSPORT DIMENSIONS

DIMENSIONI DI TRASPORTO



TECHNICAL SPECIFICATIONS

DATI TECNICI

V16-19
HYDRAULIC PILING RIG

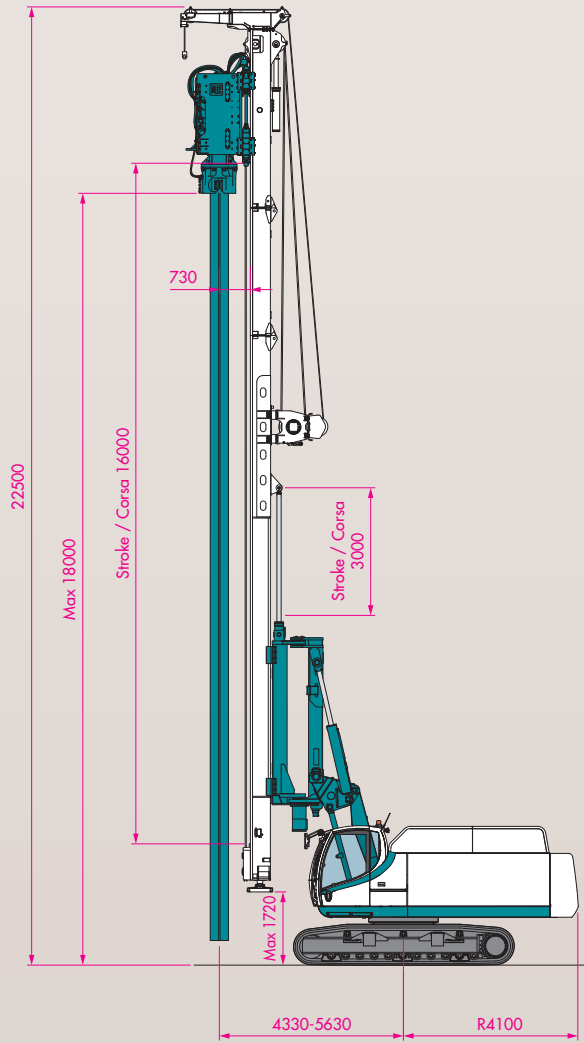
VIBRATOR FOR SHEET PILING	VIBRATORE	
Max sheet pile length	Lunghezza massima palancola	17,2 (19,7*) m
PILE DRIVING WITH HYDRAULIC HAMMER	MARTELLO IDRULICO	
Max pile length	Lunghezza massima palo	15,2 (17,7*) m
CFA Continuous Flight Auger	Elica Continua CFA	
Max depth	Profondità massima	23,2 (25,7*) m
SOIL MIXING	SOIL MIXING	
Max depth	Profondità massima	23,2 (25,7*) m
DISPLACEMENT PILE	DISPLACEMENT	
Max depth	Profondità massima	23,2 (25,7*) m
CASED CFA - VdW	CFA INTUBATI - VdW	
Max depth	Profondità massima	17,2 (19,7*) m
CSM - Soil Mixing	CSM - Soil Mixing	
Max depth	Profondità massima	16,5 (19*) m
UNDERCARRIAGE	CARATTERISTICHE CARRO	
Width with retracted/extended tracks	Larghezza con cingoli chiusi/aperti	3000/3900 mm
Tracks length	Lunghezza cingoli	5200 mm
Shoes width	Larghezza pattini	700 (opt. 800 / 900) mm
ENGINE	MOTORE	CATERPILLAR C15 ACERT TA** C18 ACERT
Power at 1800 rpm	Potenza a 1800 giri	403 kW** 470 kW
Engine conforms to Exhaust Emission Standard	Motore conforme agli standard di emissione	EU Stage IIIA/IIIB - US EPA TIER III/IVi
CROWD WINCH	ARGANO PULL-DOWN	
Max line pull	Tiro max	240 kN
Max crowd	Spinta max	240 kN
Max speed	Velocità max	35 m/min
AUXILIARY WINCH	ARGANO AUSILIARIO	
Max line pull	Tiro max	70 kN
Max speed	Velocità max	27 m/min
MAST	MAST	
Stroke of counter mast	Corsa contromast	3000 mm
Mast extensions*	Prolunghe mast*	2 x 1250 mm
Rotating jib with hydraulic cylinder*	Falchetto con rotazione idraulica*	+/- 45°
MAST INCLINATION	INCLINAZIONE MAST	
Front Rear Lateral	Avanti Indietro Laterale	4° 15° ±5°
MAST ROTATION	ROTAZIONE MAST	
Side rotation	Rotazione laterale	+/- 100°
Max allowable torque	Max coppia applicabile	135 kNm
WEIGHT	PESO	
Weight of base equipment	Attrezzatura base	~ 60 t

* Optional with mast extension 2500 mm / Optional con prolunga mast 2500 mm

** Optional / Optional

VIBRATOR FOR SHEET PILING

VIBRATORE



VIBRATOR FOR SHEET PILING

VIBRATORE

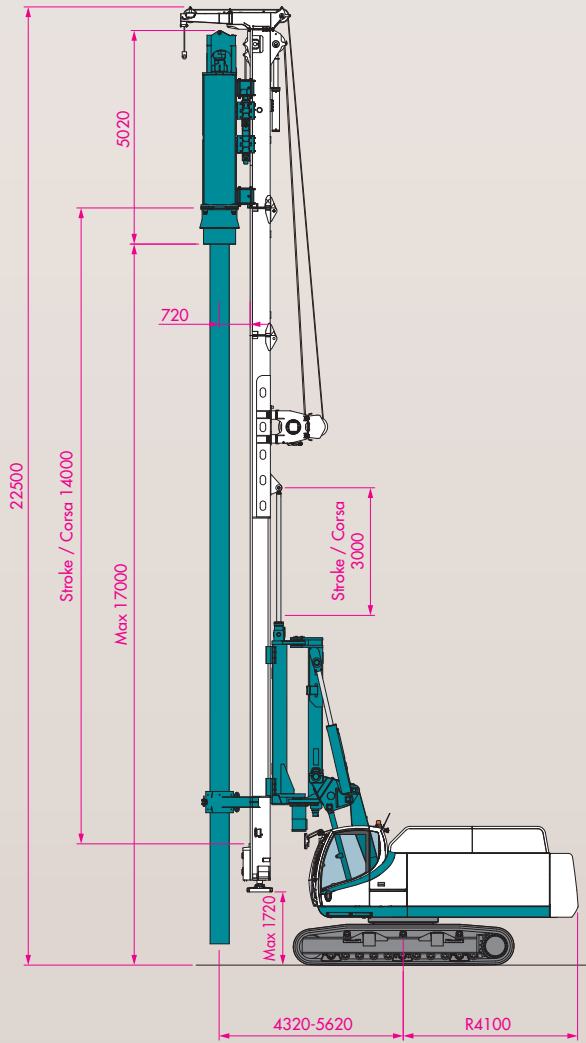
Max sheet pile length	Lunghezza massima palancola	m	17,2
-----------------------	-----------------------------	---	------

Optional	Optional		
Max extension	Prolunga mast	m	2,5

Max sheet pile length	Lunghezza massima palancola	m	19,7
-----------------------	-----------------------------	---	------

PILE DRIVING

MARTELLI IDRULICO

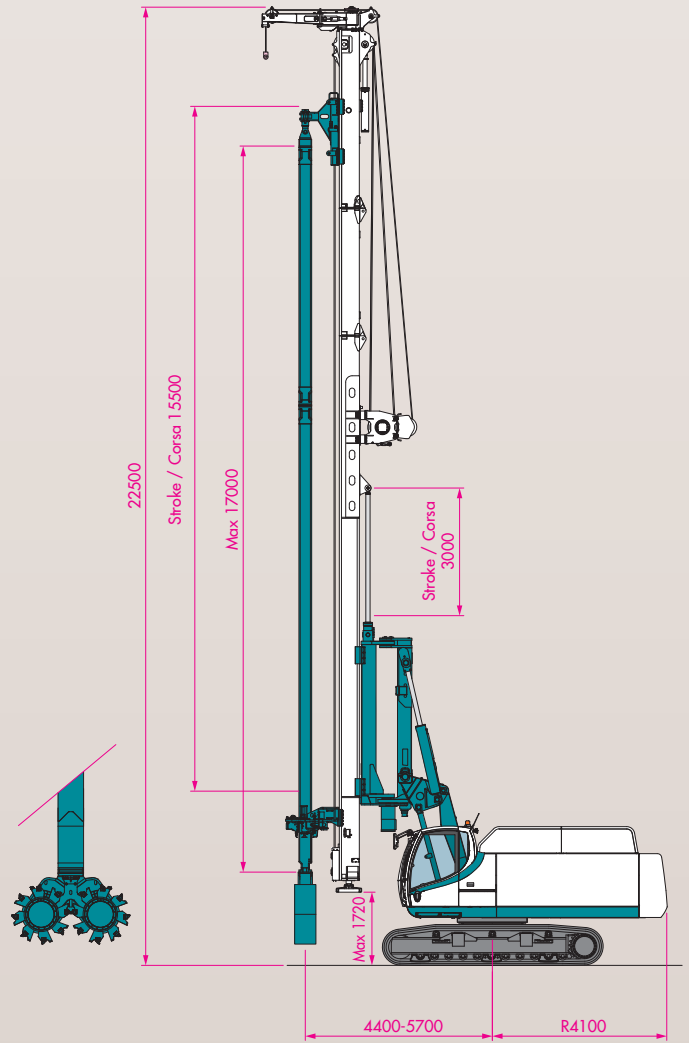


CSM

CSM

V16-19

HYDRAULIC PILING RIG



PILE DRIVING WITH HYDRAULIC HAMMER

MARTELLI IDRULICO

Max pile length	Lunghezza massima palo	m	15,2
-----------------	------------------------	---	------

Optional

Optional

Max extension	Prolunga mast	m	2,5
Max sheet pile length	Lunghezza massima palo	m	17,7

CSM Soil Mixing

CSM Soil Mixing

Max depth	Profondità massima	m	16,5
Trench	Diaframma	mm	1000x2800

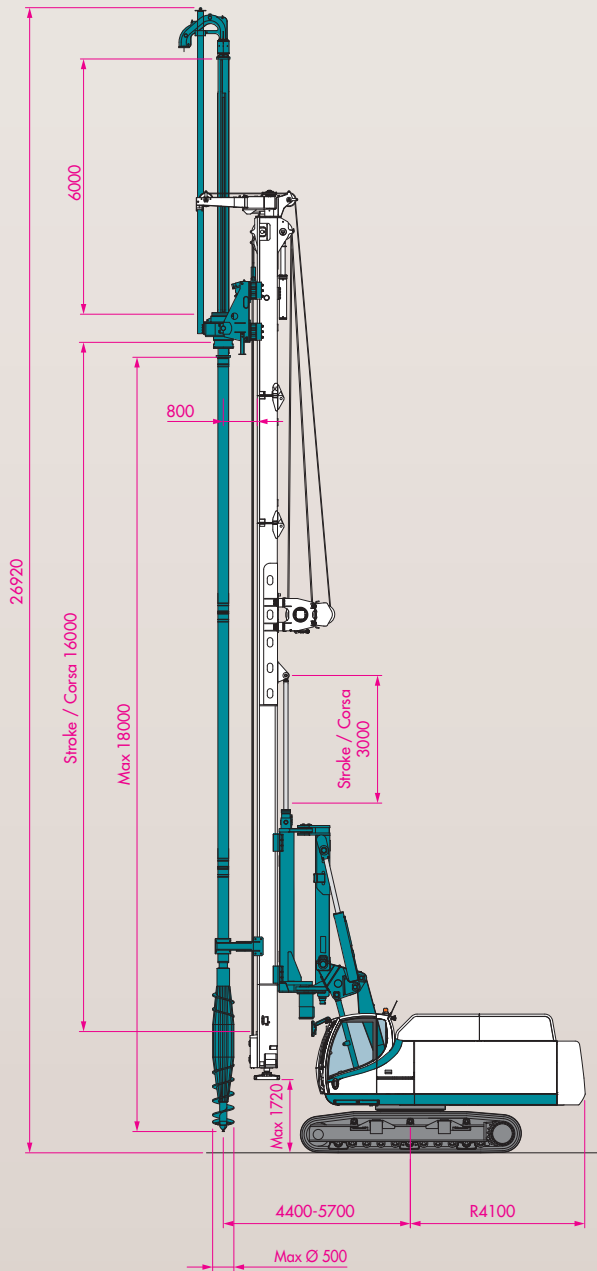
Optional

Optional

Max extension	Prolunga mast	m	2,5
Max depth	Profondità massima	m	19

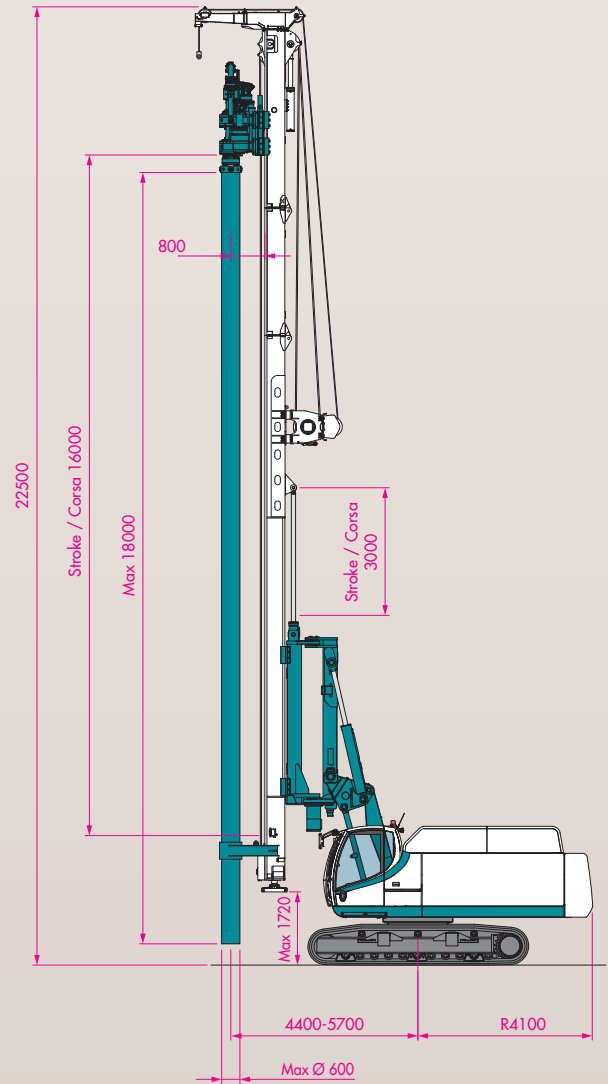
DISPLACEMENT PILE

DISPLACEMENT



CASED CFA

CFA INTUBATI



DISPLACEMENT PILE

DISPLACEMENT

Max depth	Profondità massima	m	23,2
Optional	Optional		
Max extension	Prolunga mast	m	2,5
Max depth	Profondità massima	m	25,7

CASED CFA VdW

CFA INTUBATI VdW

Max depth	Profondità massima	m	17,2
Optional	Optional		
Max extension	Prolunga mast	m	2,5
Max depth	Profondità massima	m	19,7

All data contained in this brochure are indicative and does not take power losses into account. All data can be changed without notice.
Tutti i dati riportati su questo catalogo sono indicativi e non considerano perdite di carico. Tali dati possono variare senza preavviso.



casagrande

CASAGRANDE S.P.A.

Via A. Malignani, 1 • IT 33074 Fontanafredda • Pordenone • Italy
Tel. (+39) 0434 9941 • Fax (+39) 0434 997009
www.casagrandegroup.com • info@casagrandegroup.com

